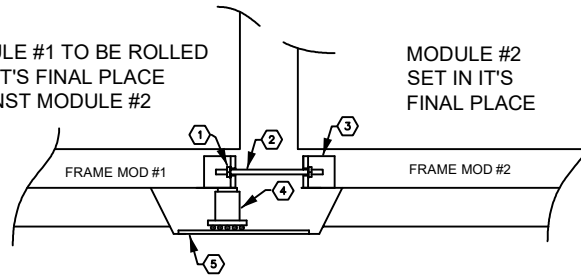


*APPEARANCE MAY VARY DUE TO CUSTOMIZATION
 DIAGRAM FOR LIFTING PURPOSE ONLY

MODULE #1 TO BE ROLLED
 INTO IT'S FINAL PLACE
 AGAINST MODULE #2

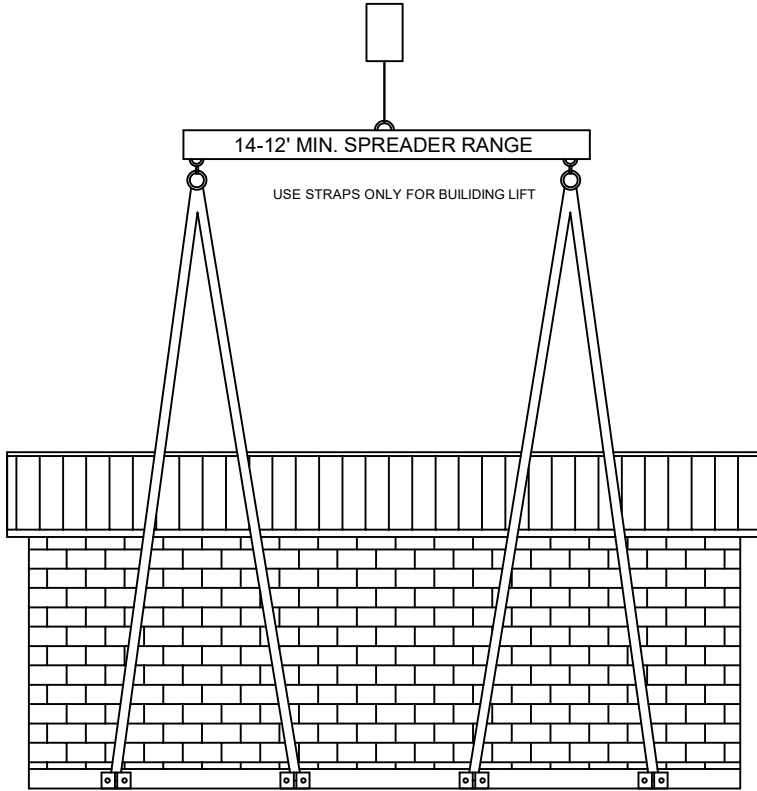
MODULE #2
 SET IN IT'S
 FINAL PLACE



NUTS TO BE TIGHTENED THUS DRAWING TOGETHER
 THE MODS USING APPROPRIATELY SIZED TOOLS
 ANGLE GRINDER WITH CUTOFF WHEELS SHALL BE
 USED TO SHORTEN THE THREADED ROD AS THE
 MODULES ARE PULLED TOGETHER

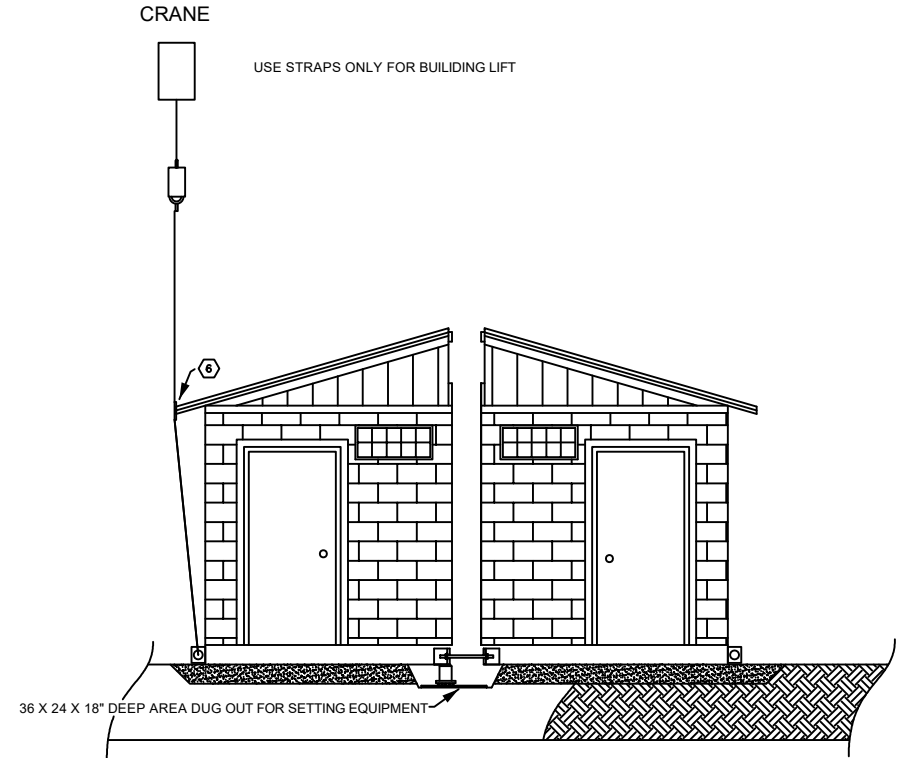
- 1 1-INCH NUT 18-8 STAINLESS HEX NUT AND FLAT WASHER EACH SIDE OF ROD
- 2 1-INCH DIA - 24" LONG HIGH STRENGTH THREADED ROD ASTM A 354 GRADE BD FINE THREAD ONE ON EACH SIDE OF THE MODULES
- 3 FACTORY MOUNTED ANGLE WITH OPENING TO PLACE THREADED ROD TYPICAL EACH MODULE EACH SIDE TO PLACE ROD THROUGH
- 4 SHORT HYDRAULIC JACK SITTING ON THE SKATE EACH SIDE OF THE MODULES JACK AND SKATE TO BE APPROPRIATELY SIZED TO MOVE THE MODULE
- 5 ROAD OR SETTING PLATE PLACED ON THE EARTH TO ALLOW SURFACE FOR SKATE TO ROLL AS THE NUTS OF THE TREADED ROD ARE TIGHTENED
- 6 PROTECTIVE MATERIAL PLACED ALONG THE FACIA OF THE MODULE TO PREVENT DAMAGE AS UPWARD PRESSURE IS APPLIED BY THE CRANE

CRANE



CRANE

USE STRAPS ONLY FOR BUILDING LIFT



*NOTE: HOOKED UP MODULE SHALL HAVE UPWARD PRESSURE APPLIED AND THE MODULE THROUGH THE CRANE ON THE OUTSIDE AND THE TWO JACKS ON THE EDGES OF THE MODULE TO BE ROLLED. THE MODULES SHALL BE DRAWN TOGETHER USING THE THREADED RODS LOCATED ON EACH END OF THE MODULE AS SHOWN

PULL TOGETHER 3: MOD 1 TO 2 | RAMSEY SPLASH PARK

26'-6"L X 9'-9"W X 11'-7"H
 CABIN: 48,000 LBS