



Natural Gas Safety

Emergency Shut-off

Be Prepared!

Get to know where all of your appliance gas shut-off valves are located, including the main shut-off valve next to the gas meter.



Appliance Shut-off Valve

Each natural gas appliance in your home should have a valve similar this in your home. These should turn easily and prevent gas flow reliably!

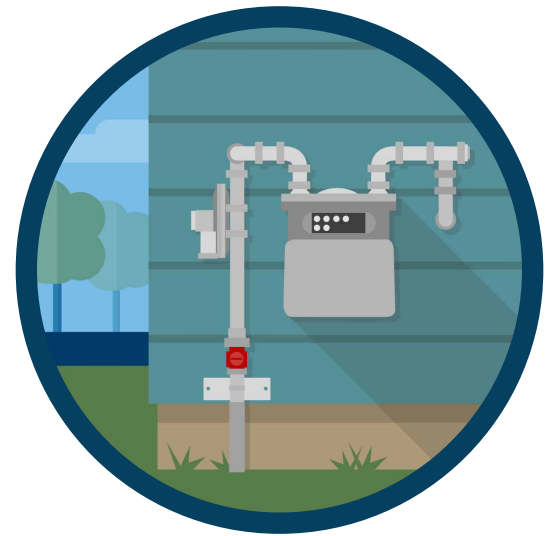
If your appliance is malfunctioning, these serve as an isolation point.

Service Line Shut-off

Your natural gas meter will always have a shut-off valve on the arrangement. Your meter can be found in either your alley way or on the side of the home.

In an emergency scenario closing your service line shut-off valve can be beneficial to emergency response personell.

These valves require an adjustable wrench to operate. Remember horizontal is off, and vertical is on.



When In Doubt Get Out!

Please call 935-1525 any time if you have a natural gas emergency.